

The STRAIGHTTALK

Brought to You by Premier Law Group

The Newsletter

April 2011 | Volume 2 | Issue 4

www.plg-pllc.com
www.StraightTalkLaw.com

Driving in an Earthquake



In This Issue...

- ◆ Driving in an Earthquake 1
- ◆ PLG's Newest Addition 2
- ◆ Negligent Driving Fines 2
- ◆ Free Books!! 3
- ◆ Fender Benders 3
- ◆ Trivia Question 4

Calendar

- ◆ April Fools Day 4/1
- ◆ World Health Day 4/7
- ◆ First Day of Passover 4/18
- ◆ Earth Day 4/22
- ◆ Easter Sunday 4/24

**FREE
Starbucks!!**

See Back for Details

With the recent 9.0 earthquake in Japan it is important for us to discuss proper driving procedures during an earthquake.

Off the Washington coast, the Juan de Fuca plate is being pushed underneath the North American Plate. Eventually this pressure from the plates grinding against each other will lead to an earthquake similar in size and destruction to the recent one in Japan.

I'm sure most of us are familiar with what to do if we are inside when an earthquake strikes (huddle under a piece of furniture and hold on for dear life), but what are you supposed to do if you are inside a vehicle during an earthquake??

If you are in a car during an earthquake...

Slowly come to a stop- you do not want to catch panicking drivers off guard by braking suddenly

Park your car when it is safe- park in a clear area- avoid trees, buildings, power lines, underpasses and bridges

Stay in the car- until the earthquake has stopped, remain in your vehicle unless there is an immediate threat inside your car. Also, be sure to Leave your seatbelts on

Keep the radio on- there will be updates over the air that will help you navigate the earthquake. Only start driving If authorities declare it is safe to do so

Driving after the quake- when it has been declared safe to drive, proceed with caution- avoid bridges, overpasses and ramps that may have been damaged. Watch out for cracks and breaks in the road

Avoid Power Lines: DO NOT drive over fallen power lines. If you come across downed power lines contact the police department.

Watch out for Aftershocks- Japan was experiencing large aftershocks (6.0 +) for days after the massive quake- be aware that aftershocks may occur and get yourself into a safe place as soon as possible

Start Preparing Now- keep an emergency kit inside your car containing...

- ◆ Blanket
- ◆ Fire extinguisher
- ◆ Flashlight and batteries
- ◆ Matches
- ◆ First Aid Kit
- ◆ Maps
- ◆ Battery operated radio
- ◆ Prescription medications
- ◆ Water
- ◆ Granola bars

You Have Questions— We Have Answers!

Question...

Am I entitled to collect money for the loss of my loved one?

Answer...

As Washington state wrongful death law currently stands, only beneficiaries can collect money in a wrongful death case. These beneficiaries have to be directly affected by the loss of the person in a financial way in order to collect money. The first group of possible beneficiaries includes the spouse, children and stepchildren. If a spouse or child does not exist, a parent or sibling may collect, but only if they are financially dependent on the deceased.

PLG's Newest Addition

**Premier Law Group
welcomes its newest
addition Andrew Kang.**

Andrew Lee Kang was born at 11:24 the night of March 6th, 2011 and weighed 7 lbs 14 ounces.



Andrew is the second child of attorney Patrick Kang and his wife Jaime Kang.

The Kang Families oldest daughter, Maddie (pictured above), appears to be enjoying her new little brother.

Upload your cute children pictures to our Facebook page for a chance to win a FREE Starbucks Gift Card*.

Visit www.facebook.com/PremierLawGroup

All contestants will be entered into a drawing for a \$15.00 Starbucks Gift Card.

Senate Passes New Penalties for Negligent Driving

Bicyclists and pedestrians are extremely vulnerable to injuries suffered in accidents with motor vehicles. Even when the pedestrian or bicyclist follows the rules of the road, accidents are possible because of negligent drivers. In 2009, 287 pedestrians and 110 bicyclists were seriously injured as a result of drivers who failed to yield, ran a red light, or were not paying attention. Until now, the negligent driving that causes these accidents has been subject to a traffic ticket carrying a maximum fine of \$250. Even if the accident results in the death of a pedestrian or cyclist, the driver is only fined \$250 while the family of the victim has to deal with a serious injury or loss of life.

The Washington State Senate has recently taken action to fix this loophole in the law. On February 22nd, SB 5326 passed through the Senate in a 43-5 vote. This bill increases the penalty for negligent drivers. Drivers who are found to be the cause of an accident that causes death, serious injury, or substantial injury to a "vulnerable user"

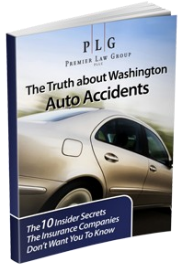
of a public road are subject to a fine from \$1,000 to \$5,000 and a 90 day suspension of their driver's license. Vulnerable users include pedestrians, cyclists, operators of mopeds or other motorized scooters, equestrians, and tractor drivers. In order to become law, this bill needs to be passed in the house and signed by the governor.

While a step in the right direction, this bill does not eliminate the risks involved with riding a bike or walking down the street. This means that pedestrians and bicyclists must still be aware of the dangers of negligent and distracted drivers that plague our roads.

Bicyclists and pedestrians must make sure they protect themselves by following all traffic laws and looking both ways before crossing a street.

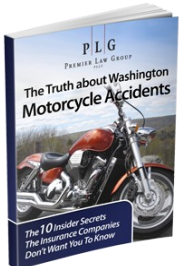


Recently In an Auto Accident? Read These FREE Books!



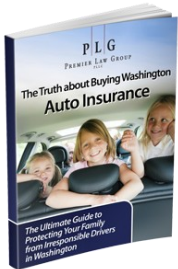
The Truth About Washington Auto Accidents:

- ◆ 10 secret insurance companies don't want you to know
- ◆ Do you really need an attorney??
- ◆ The legal process
- ◆ How to pick an auto accident attorney



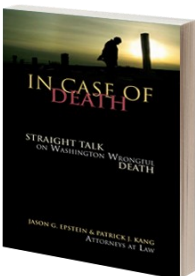
The Truth About Washington Motorcycle Accidents:

- ◆ 10 secrets insurance companies don't want you to know
- ◆ How to choose a motorcycle accident attorney
- ◆ Do you have a winnable case?



The Truth About Buying Washington Auto Insurance:

- ◆ What is Personal Injury Protection
- ◆ What is UM/UIM protection and how much do you need?
- ◆ How to protect your family in case of an auto accident



In Case of Death: The Truth About Washington Wrongful Death:

- ◆ What is Washington Wrongful Death
- ◆ How a wrongful death claim works
- ◆ Do you really need an attorney
- ◆ How to pick a wrongful death lawyer

Order Your FREE Copies Today!

E-mail Bailie@plg-llc.com with the titles you would like and your address

A Fender Bender is No Walk in the Park



A few years ago, CNN published a startling report that revealed unsavory tactics used by insurance companies.

Reporters investigated the behavior of auto insurers in minor car accident claims and discovered that many of the large insurance companies have been paying out less and less.

CNN reporters conducted an 18-month investigation into minor impact, soft tissue injury crashes that occurred throughout the country. These were accidents that resulted in very little vehicle damage and injuries that were not easily visible to the naked eye. More than 6,000 company documents and court records were reviewed and dozens of people, including former insurance company insiders and accident victims, were interviewed.

Here is what the reporters had to say about their findings:

“Since the mid-1990’s most of the major insurance companies—led by the largest, Allstate and State Farm—have adopted a tough take-it-or-leave-it strategy when dealing with such cases.”

The CNN article, Auto Insurers Play Hardball in Minor Crash Claims, mentioned one former insurance claims agent who said that company employees were “encouraged to get rid of claims quickly and cheaply and even offered accident victims as little as \$50, telling them to take it or leave it.”

According to the article, some insurance companies have left accident victims with no choice but to go to court to challenge their settlement offers, however, going to trial is no guarantee that a better outcome will be reached.

If you have been injured in a minor accident, your best bet is to talk to a lawyer.

Premier Law Group is a Bellevue, Washington based personal injury and employment law firm serving clients throughout Washington state. Premier Law Group's focus is on auto accidents, motorcycle accidents, work injuries, pedestrian and bicycle injuries, wrongful termination, sexual harassment in the workplace, workplace discrimination, family and medical leave wage claims, retaliation claims and medical malpractice claims.

If you need to talk to an experienced attorney contact our offices to schedule a FREE consultation. If we can't help you we will tell you who can! **Call 206-285-1743 or e-mail Bailie@plg-llc.com**



PREMIER LAW GROUP
PLLC

3380 146th Place SE
Suite 430
Bellevue, WA 98007

Phone: 206-285-1743
Fax: 206-599-6316
E-mail: jason@plg-pllc.com

To be removed from this mailing list:
call: 206-285-1743
email: Bailie@plg-pllc.com

In This Issue...

[Driving in an Earthquake](#)

[PLG's Newest Addition](#)

[New Penalties for Negligent Drivers](#)

[A Fender Bender? Not a Walk in the Park](#)

FREE Legal Resource Guides



- The Truth About Washington Auto Accidents
- The Truth About Washington Motorcycle Accidents
- The Truth About Buying Washington Auto Insurance
- In Case of Death: Straight Talk on Washington Wrongful Death

Contact: Bailie@plg-pllc.com

Trivia Question of the Month

What does
'April' Mean?

First person to email the
correct answer to
Bailie@plg-pllc.com will
win a Starbucks gift card!!



Follow Us On Twitter:
[Twitter.com/StraightTalkLaw](https://twitter.com/StraightTalkLaw)
[Twitter.com/PremierLawGroup](https://twitter.com/PremierLawGroup)



Become a Fan on Facebook:
[Facebook.com/StraightTalkLaw](https://facebook.com/StraightTalkLaw)
[Facebook.com/PremierLawGroup](https://facebook.com/PremierLawGroup)

March Madness Contest!!



Win FREE Starbucks!!!

March Madness has been as exciting as ever this year, and we want to hear from all of you basketball fans out there.

Send an email to bailie@plg-pllc.com before the championship game on April 4th with your pick of who is going to win and what the final score will be. Whoever is closest will get a \$20 Starbucks gift card!



PLG

PREMIER LAW GROUP
PLLC

This newsletter is intended to educate the general public about personal injury, medical malpractice, and small business issues. It is not intended to be legal advice.