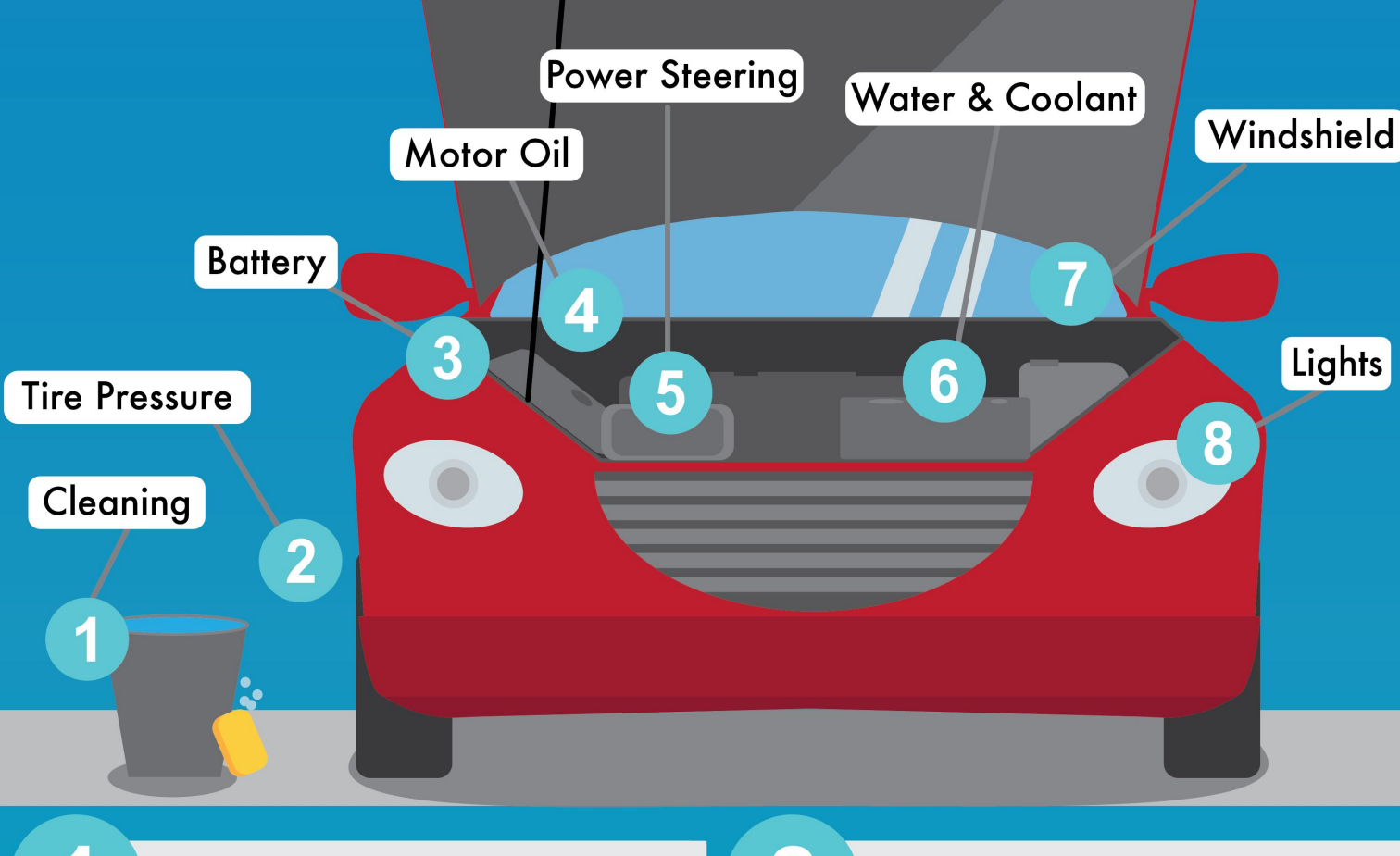


# Car Maintenance

## BASICS

### Before you head out



#### 1 Clean regularly

- Lights, indicators, reflectors, and license plates.
- Windows inside and out.
- Car interior to prevent distractions when driving.

#### 2 Tire Pressure and tread

- Check tire pressure and tread weekly.
- regularly check for cuts or damage to tires.
- Over inflated and over inflated tires can be unsafe.

#### 3 Check Battery

- Use a qualified mechanic or with a car battery tester.

#### 4 Motor Oil

- Check oil regularly, always before long journeys.
- Oil level should be between the two lines on the dipstick.

#### 5 Power Steering

- Low fluid level if steering becomes heavy.
- correct fluid level, ask a mechanic to take a look.
- if losing fluid, ask a mechanic to take a look.

#### 6 Water & Coolant

- Prevents cars radiator from freezing or overheating.
- To avoid injury, only open radiator cap on cold engine.

#### 7 Windshield

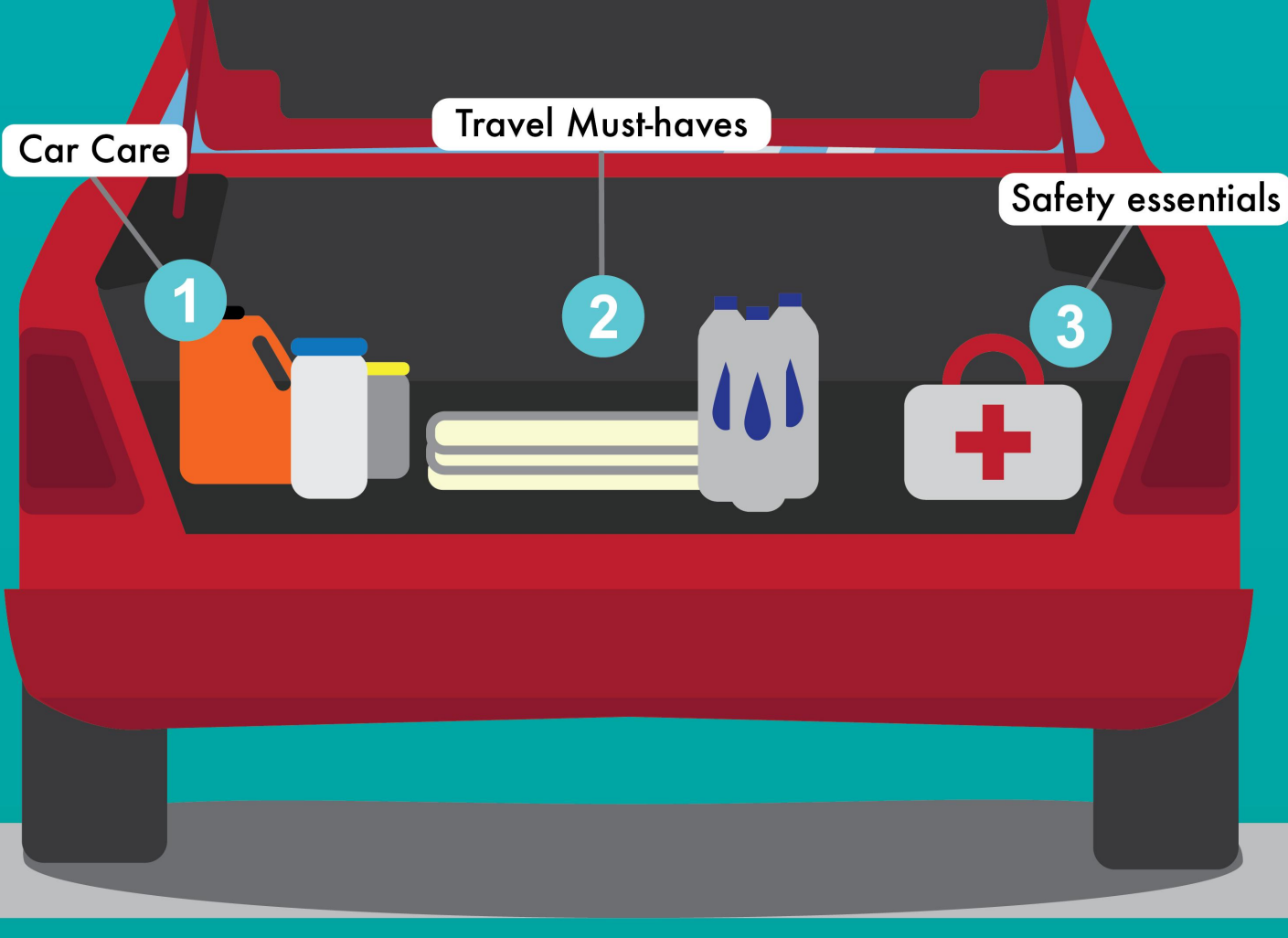
- Check your window for chips or cracks.
- Small, unattended chips can grow into cracks.
- check wipers regularly and replace when needed.

#### 8 Lights

- Check lights regularly to make sure they are working.
- Ensure brake, indicator, and fog lights work.
- Check lights to see if properly adjusted.

max  
min  
Water levels should be between max and min marks on water tank.

### On The Road



#### 1 Car care & road safety basics

- Car jack
- Tire wrench
- Oil & other engine fluids
- Window wash
- Jumper cables
- Flares

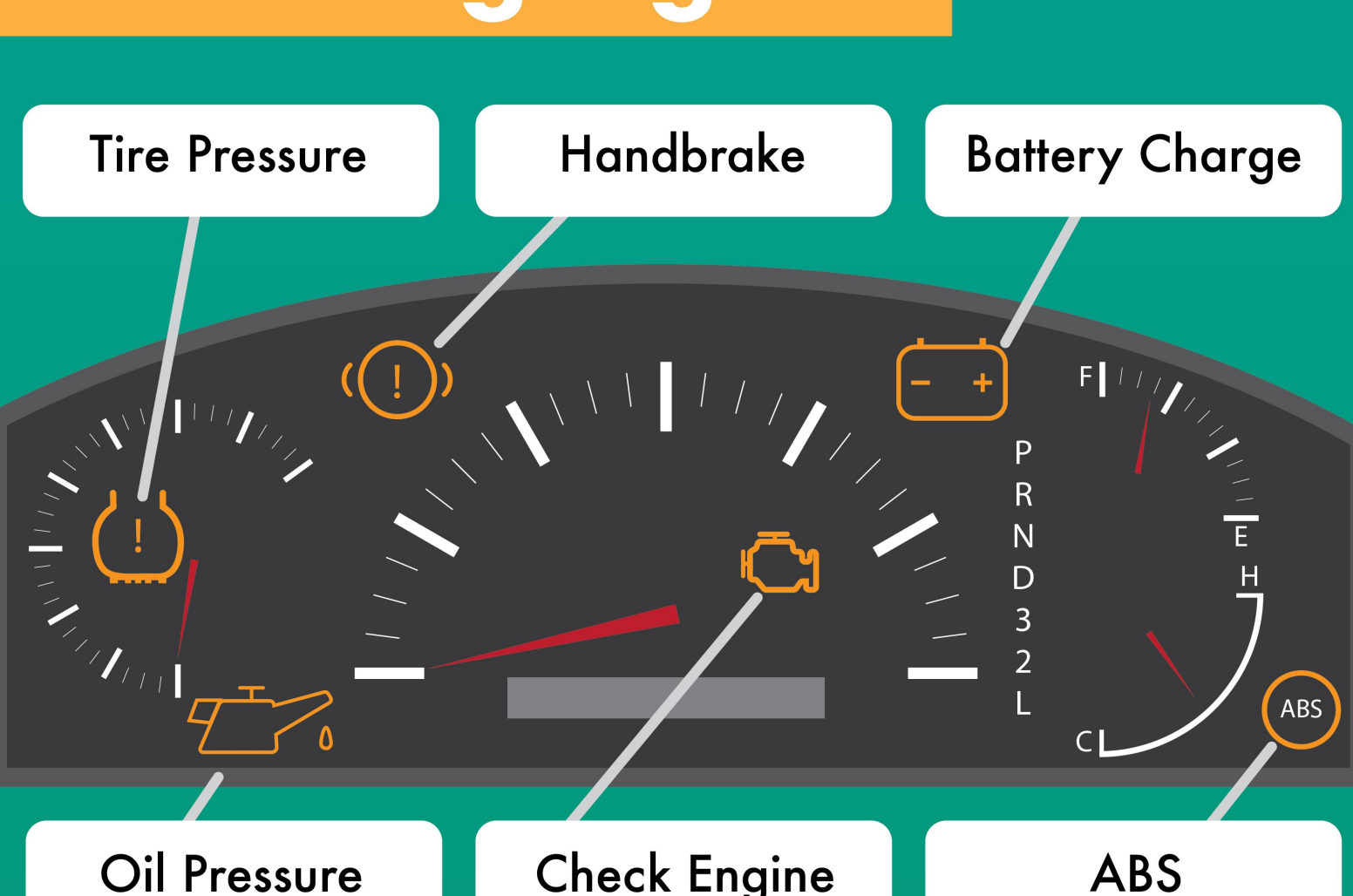
#### 2 In-car travel must-haves

- Water
- Blankets
- Sunglasses
- Flashlight
- Phone charger
- GPS

#### 3 Health & safety essentials

- First Aid
- Reflector Vest
- Small fire extinguisher

### Warning Lights



- Tire Pressure**  
You may need to fill the tires, check for punctures.
- Handbrake**  
Have brake fluid checked.
- Battery Charge**  
May be issue with battery charging.

- Oil Pressure**  
Oil may need to be topped off.
- Check Engine**  
Issue with engine systems.
- ABS**  
Issue with braking system.